



U.S. DEPARTMENT OF  
**ENERGY**

Office of Economic  
Impact and Diversity

# Justice40 and the path to Equitable Deep Decarbonization

Tony G. Reames, PhD  
Senior Advisor on Energy Justice  
AGCI Workshop  
September 15, 2021





A scenic landscape featuring a series of white wind turbines on a grassy hill. The scene is captured during sunset or sunrise, with a warm, golden glow on the horizon and a soft, hazy atmosphere. The turbines are arranged in a line, receding into the distance. The sky is a mix of orange, yellow, and blue, with some clouds visible. The overall mood is peaceful and hopeful, suggesting a focus on renewable energy.

How do we transform our  
energy system while ensuring  
the energy system becomes  
more equitable and just?



**Executive Order 14008:  
Tackling the Climate  
Crisis at Home and  
Abroad  
(1/27/21)**

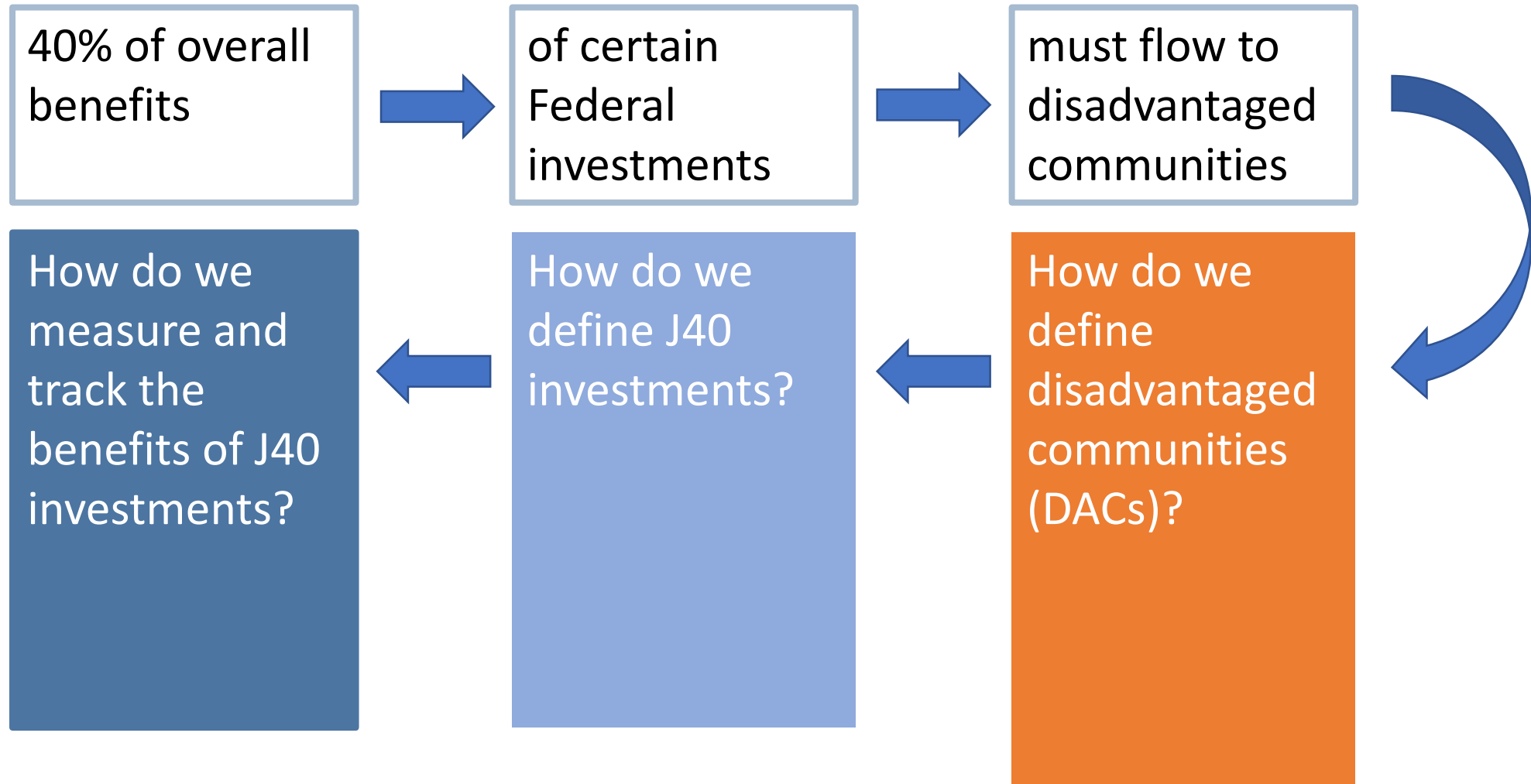
- The Biden Administration is committed to environmental, energy, and climate justice
- EO 14008, Sec. 223, established the Justice 40 Initiative
- States that each Federal Agency must play a part
- Centers the ambition of the energy transition around equity



# What is Justice40?

40% of the overall benefits of certain Federal investments—including **investments in clean energy and energy efficiency; clean transit; affordable and sustainable housing; training and workforce development; the remediation and reduction of legacy pollution; and the development of clean water infrastructure**—must flow to disadvantaged communities.

# Justice40 In Three Buckets...





PLACE

A teal-colored rectangular sign with rounded corners and a white border. The word "PLACE" is written in white, bold, sans-serif capital letters.

MATTERS

An orange-colored rectangular sign with rounded corners and a white border. The word "MATTERS" is written in white, bold, sans-serif capital letters.

# Defining Disadvantaged Communities (DACs)

- **Community-**

- either a group of individuals living in geographic proximity to one another
- a geographically dispersed set of individuals (such as migrant workers or the formerly incarcerated) where either type of group experiences common conditions

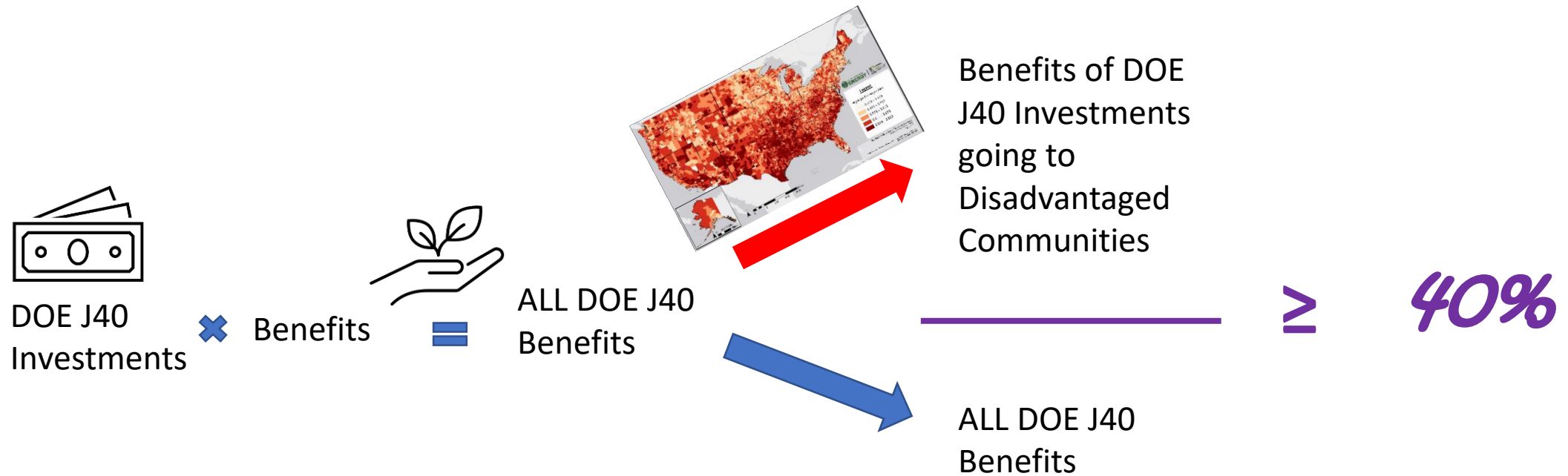


# Defining Disadvantaged Communities (DACs)

- **Disadvantaged-**
  - Low income, high and/or persistent poverty
  - High unemployment and underemployment
  - Racial and ethnic residential segregation, particularly where the segregation stems from discrimination by government entities
  - Linguistic isolation
  - High housing cost burden and substandard housing
  - Distressed neighborhoods
  - High transportation cost burden and/or low transportation access
  - Disproportionate environmental stressor burden and high cumulative impacts
  - Limited water and sanitation access and affordability
  - **Disproportionate impacts from climate change**
  - **High energy cost burden and low energy access**
  - **Jobs lost through the energy transition**
  - Access to healthcare



# How will we determine that disadvantaged communities are receiving 40% of the benefits?

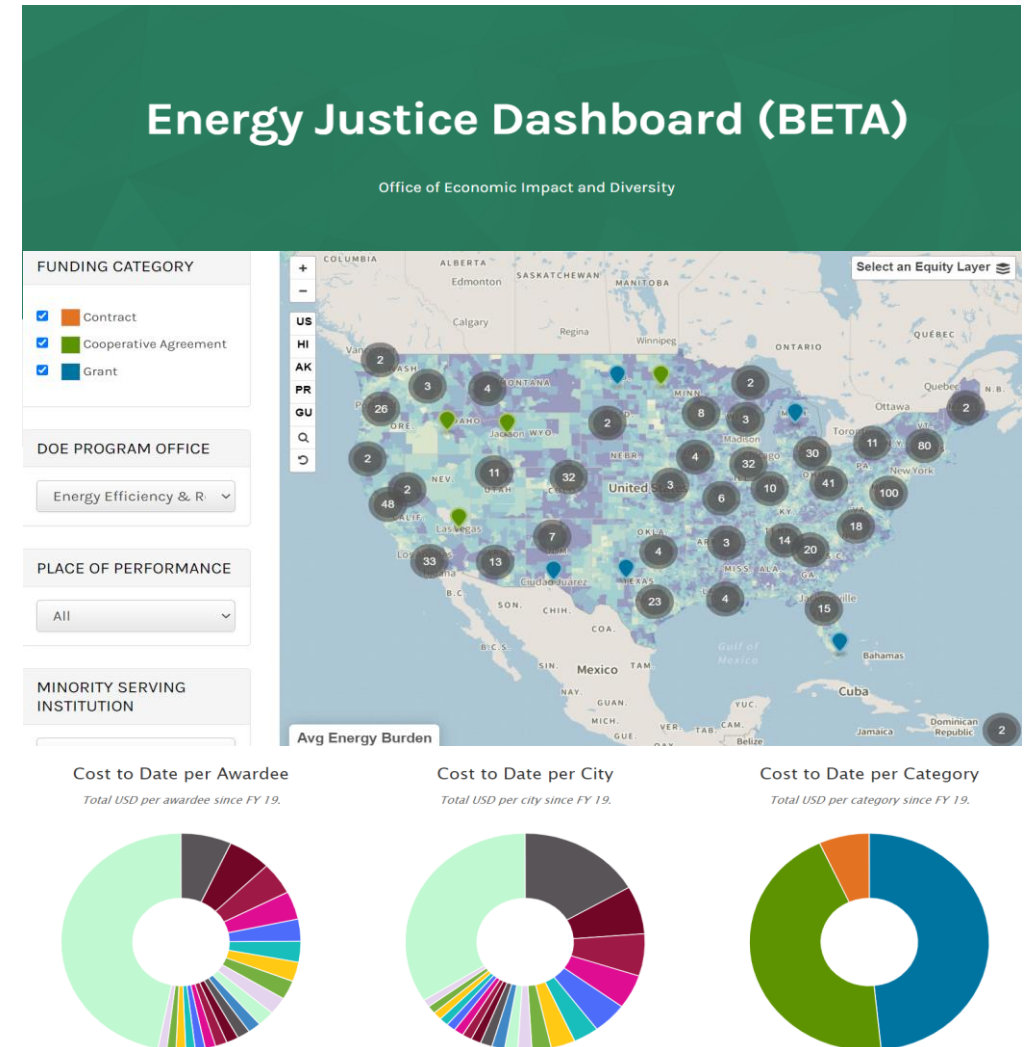




## Accountability & Transparency

### Energy Justice Dashboard (BETA)

A tool to measure and track DOE progress toward Justice40 and see investments in real time.

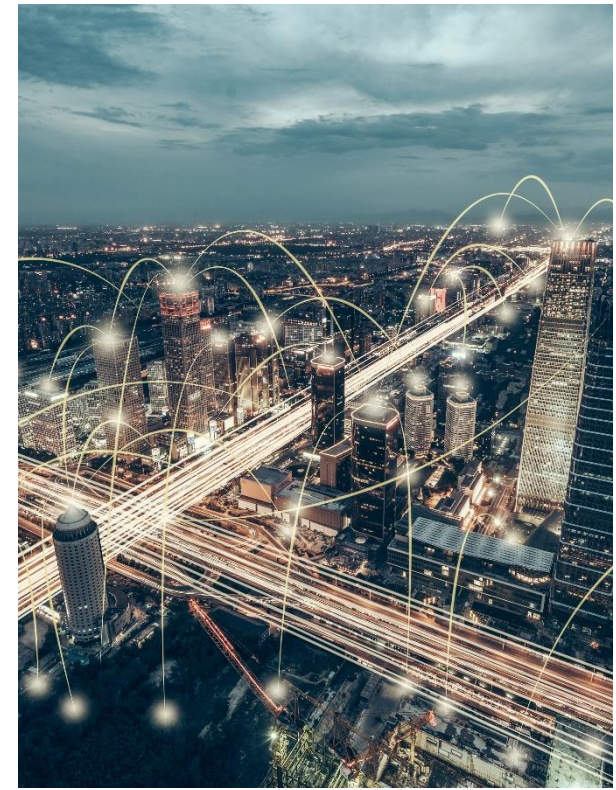




## DOE Justice40 Policy Priorities

- (1) Decrease **energy burden** in DACs.
- (2) Increase **parity in clean energy technology** (e.g., solar, storage) **access and adoption** in DACs.
- (3) Increase **access to low-cost capital** in DACs.
- (4) Increase **clean energy enterprise creation** (MBE/DBE) in DACs.
- (5) Increase the **clean energy job pipeline and job training** for individuals from DACs.
- (6) Increase **energy resiliency** in DACs.
- (7) Increase **energy democracy** in DACs.





Community-led.  
All of Government.  
Equitable Deep Decarbonization.  
Justice40.

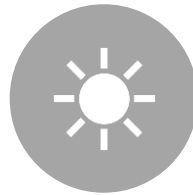




# Equitable Deep Decarbonization



Distributed Clean Energy



Utility Scale Clean Energy



Energy Efficiency  
(Residential and  
Commercial)



Clean Transit



Work Force Development  
through Manufacturing  
or Similar Investment



MBE Acceleration



GHG and Co-Pollutant  
Reduction



HBCU & MSI Research &  
Development



Place-based strategies

# How Do We Get to Justice40?

## A Layered, Collaborative Approach



**Federal:** R&D, Technical Assistance and deployment support

**State and Local:** Local planning, Federal \$ recipients, regulatory authority

**Philanthropy:** Community and MBE capacity building

**Private Sector:** Unlock long-term, transformative investment



U.S. DEPARTMENT OF  
**ENERGY**

---

## Office of Economic Impact and Diversity

Tony G. Reames, PhD  
Senior Advisor on Energy Justice  
[tony.reames@hq.doe.gov](mailto:tony.reames@hq.doe.gov)