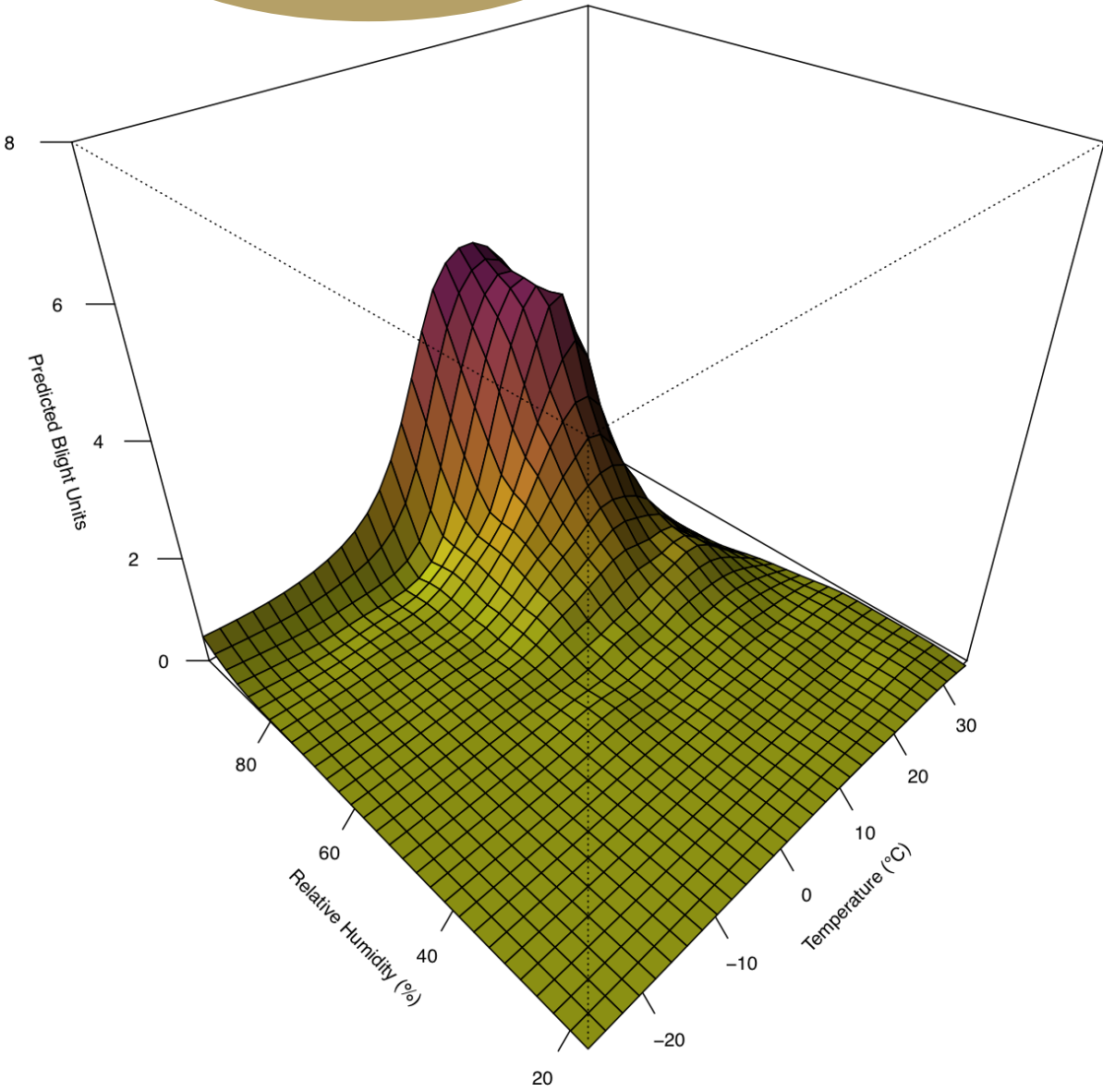
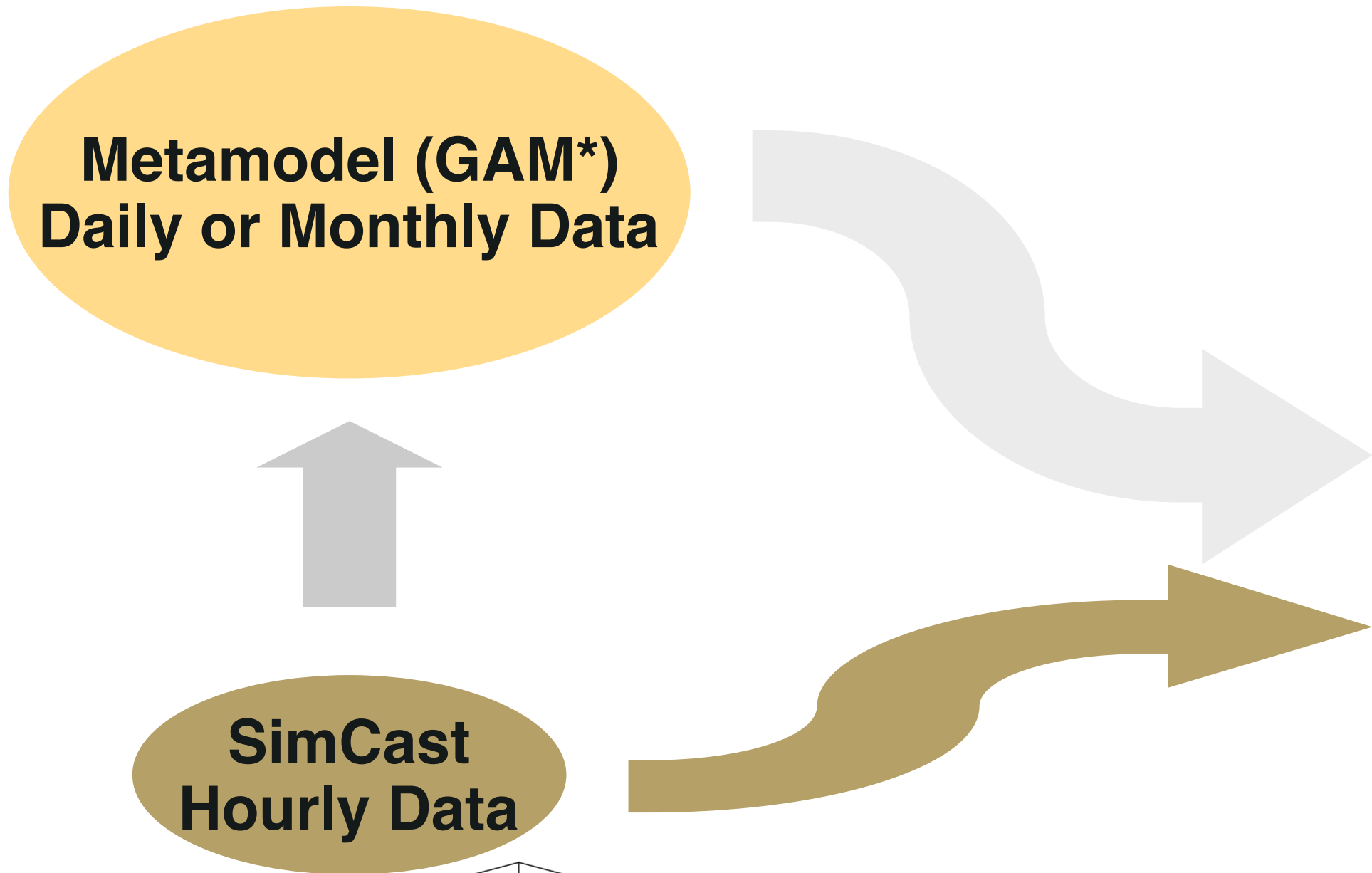
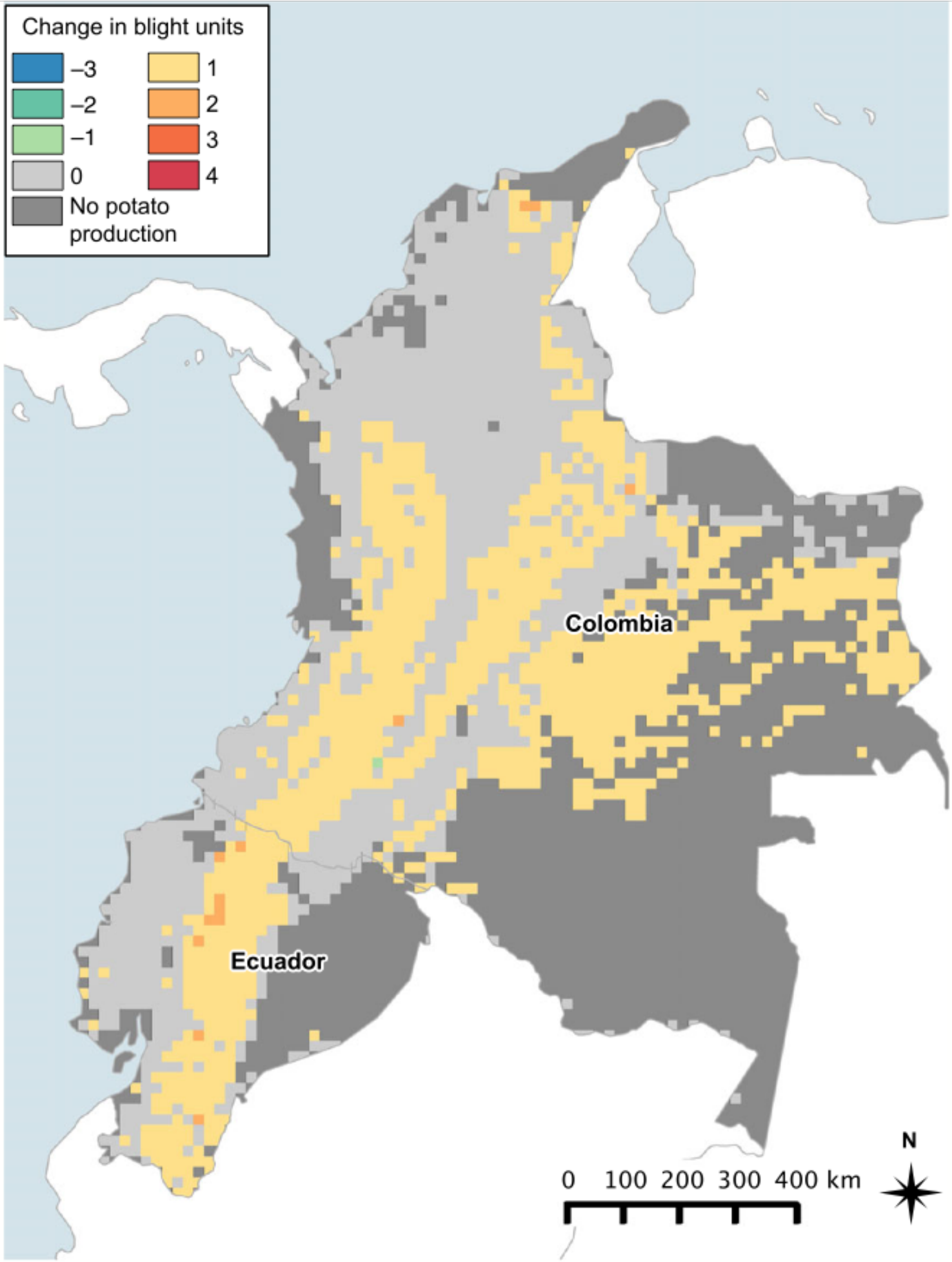


Climate change may have limited effect on global risk of  
potato late blight

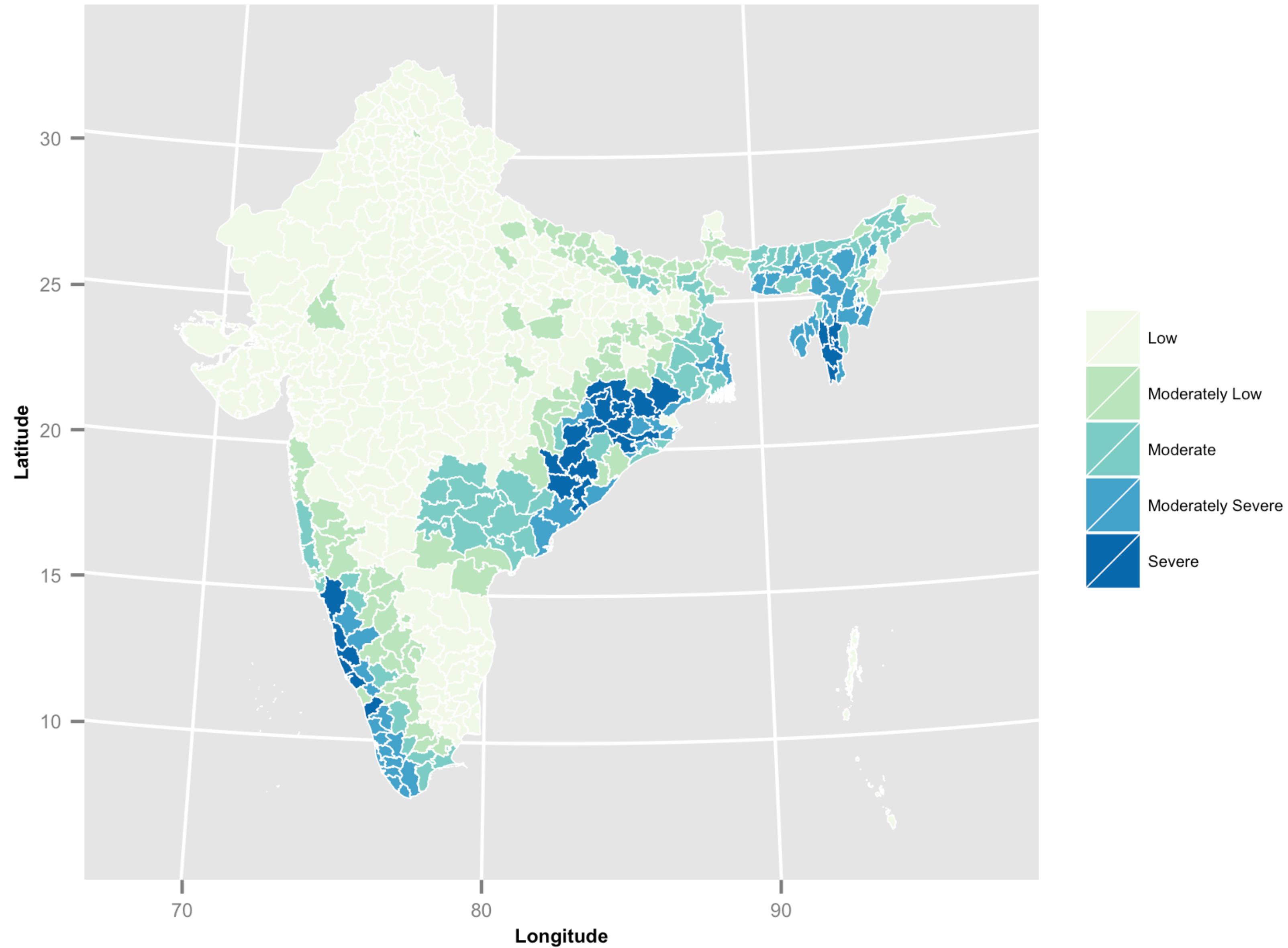


$$BU = s(T, RH, k = 150)$$



**Fig. 6** The change in potato late blight relative risk for the Andean Highlands of Colombia and Ecuador as predicted by SimCastMeta model using historic climate normal, 1961–1990 (1975 time-slice) and 2040–2059 (2050 time-slice) A2 climate scenario for a susceptible potato genotype. *IPCC* A2 time-slices are ensemble model averages of three global climate models. Blight units are a predictor of biological risk based on weather and potato genotypic resistance.

## Relative Risk of Brown Spot for India



The boundaries and names shown and the designations used on this map do not imply official endorsement or acceptance by IRRI.