

Lessons Learned in Pacific LDCs

CHRIS BOYER

CENTER FOR HEALTH & THE GLOBAL ENVIRONMENT (CHANGE)

UNIVERSITY OF WASHINGTON

Integrating climate change Adaptation and Disaster Risk Management to Protect Health and Build Resilience in Pacific Islands

May 20-25 2018

East-West Center and Aspen Global Climate Institute

Outline

- Overview of GEF Project
 - Give a sense of the process
 - Project outcomes, outputs, activities
- Highlight lessons learned (success factors, themes, questions, etc.)





Source: National Geographic

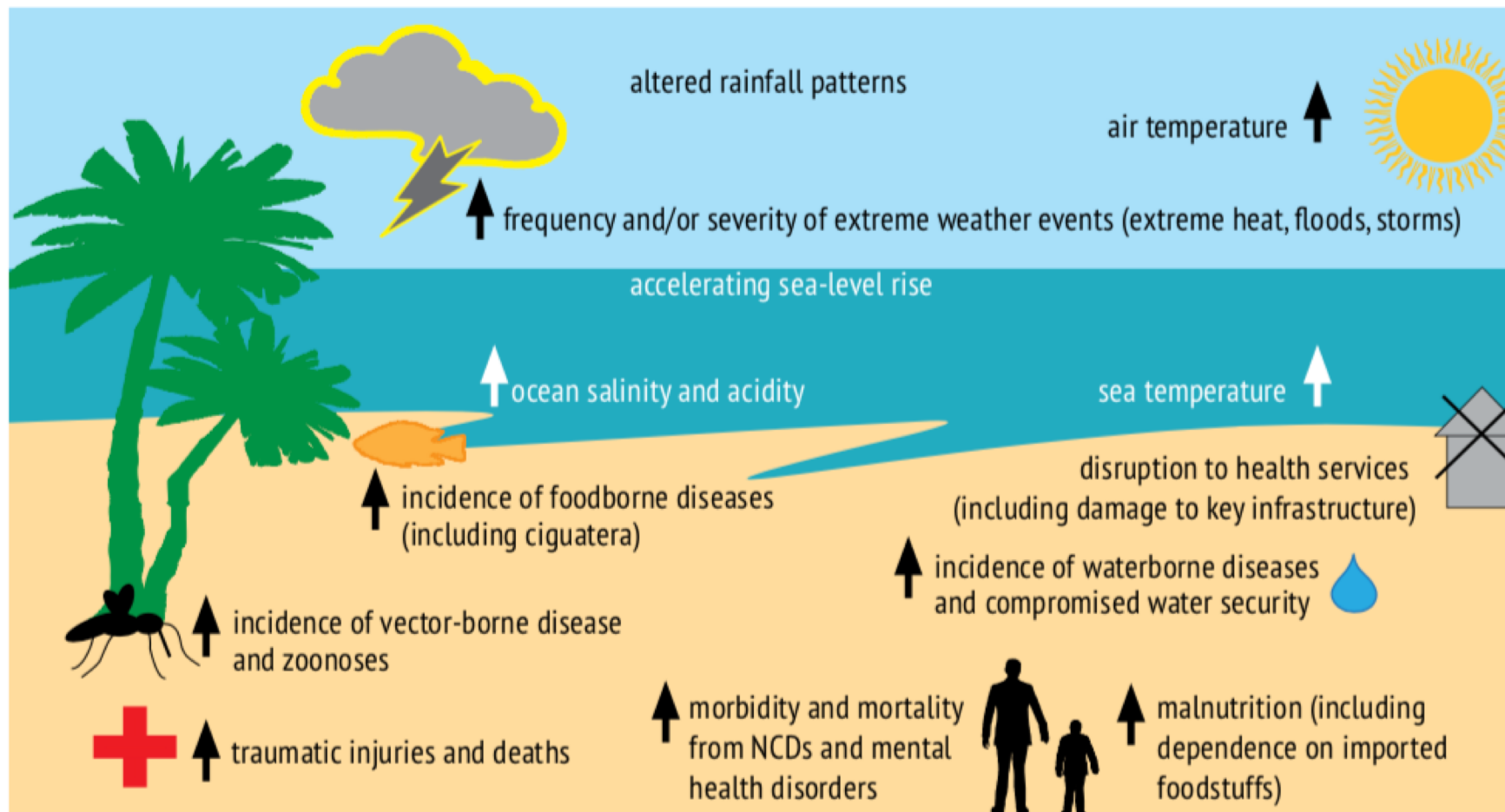








Climate Change Impacts on Health



Pathways for health impacts

- direct and indirect exposures
- social disruption
- detrimental impacts on economic and human developments

Mediators of health impacts

- sociopolitical strategies
- environmental measures
- health systems resilience
- economic development



National Referral
Hospital, Honiara,
Solomon Islands

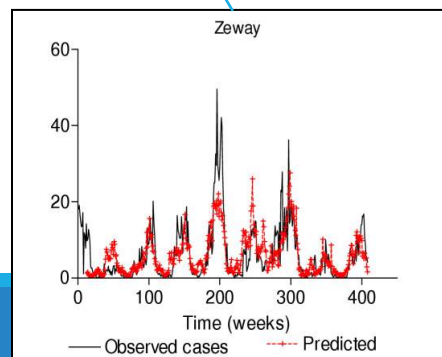


Vanuatu Health System





Building Climate-Resilient Health Systems



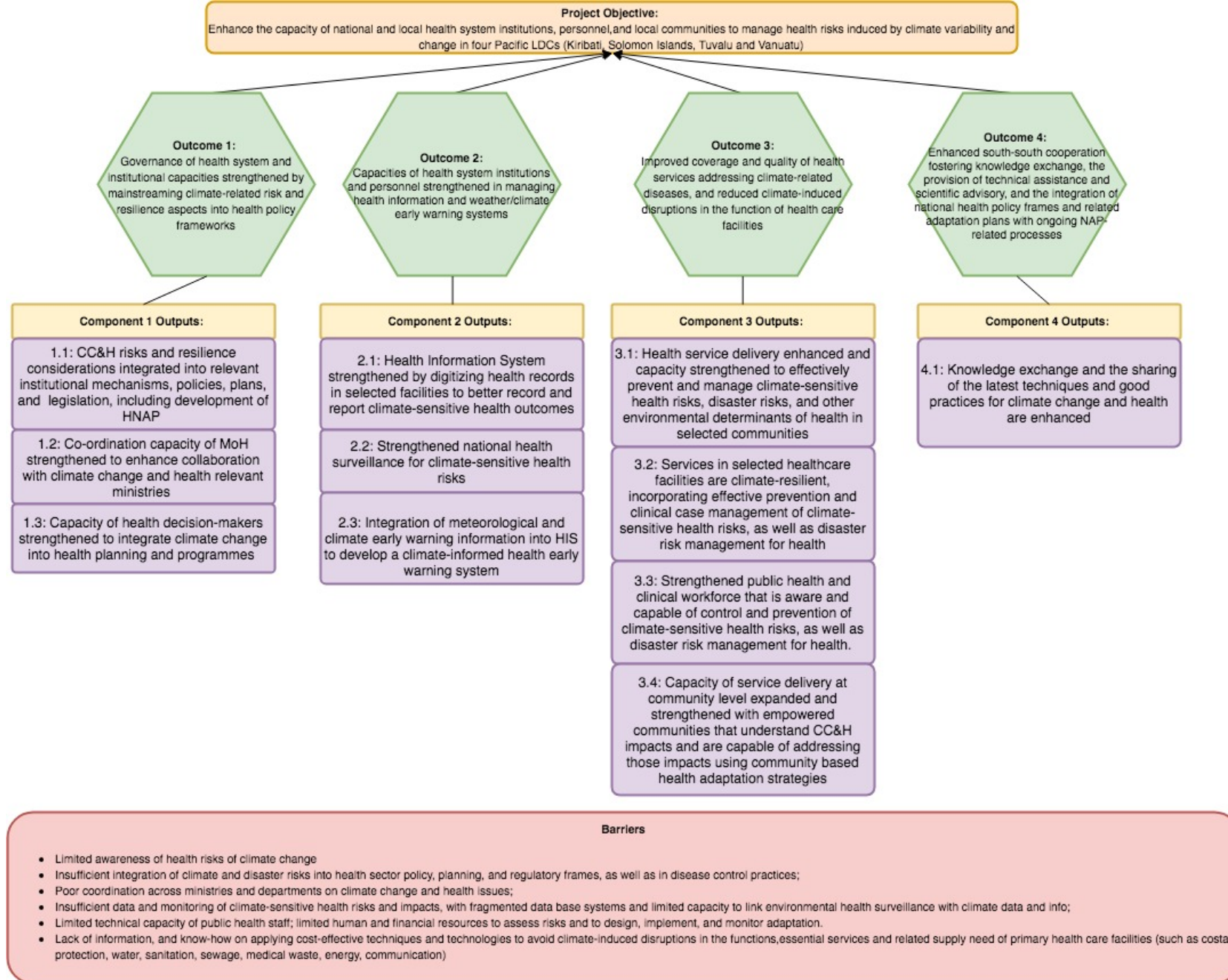
GEF Project Objective & Outcomes



Project Objective: Enhance the capacity of national and local health system institutions, personnel, and local communities to manage health risks induced by climate variability and change

Project Outcomes

1. Governance of health system and institutional capacities strengthened by mainstreaming climate-related risk and resilience aspects into health policy frameworks:
2. Capacities of health system institutions and personnel strengthened in managing health information and weather/climate early warning systems
3. Improved coverage and quality of health services addressing climate-related diseases, and reduced climate-induced disruptions in the function of health care facilities
4. Enhanced south-south cooperation fostering knowledge exchange, the provision of technical assistance and scientific advisory, and the integration of national health policy frames and related adaptation plans with ongoing NAP-related processes



Outcome 1: Governance of health system and institutional capacities strengthened by mainstreaming climate-related risk and resilience aspects into health policy frameworks

Output 1.1: Climate change and health risk and resilience considerations integrated into relevant institutional mechanisms, policies, plans, and legislation.

Output 1.2: Co-ordination capacity of MHMS strengthened to enhance collaboration with climate change and health-relevant agencies and ministries, including the Health Sector Coordination Committee (HSCC) and the Kiribati National Expert Group on Climate Change and Disaster Risk Management (KNEG)

Output 1.3: Capacity of health decision-makers strengthened to better understand and integrate climate change risks in health planning and programmes

Outcome 2: Capacities of health system institutions and personnel strengthened in managing health information and weather/climate early warning systems

Output 2.1: HIS strengthened by digitizing health records in selected facilities to better record and report climate-sensitive health risks

Output 2.2: Strengthened national health (and environmental health) surveillance to include climate-sensitive health risks

Output 2.3: Integration of meteorological and climate early warning information into HIS, through collaboration with the MHMS and other relevant ministries to develop a climate-informed health early warning system

Outcome 3: Improved coverage and quality of health services addressing climate-related diseases, and reduced climate-induced disruptions in the function of health care facilities

Output 3.1: Health service delivery enhanced, and capacity strengthened to effectively prevent and manage climate-sensitive health risks, including water-and-food-borne disease, vector-borne disease, and nutrition/food security, as well as disaster risks, and other environmental determinants of health in selected sites.

Output 3.2: Vila Central Hospital, Northern Provincial Hospital, and other high-risk healthcare facilities have reduced disruptions of services during extreme weather and climate events by incorporating improved access to health services, sufficient medical and disaster response supplies, improved access to climate-smart energy, improved communication resources and technologies.

Output 3.3: Strengthened public health and clinical workforce that is aware and capable of control and prevention of climate-sensitive health risks, as well as disaster risk management for health

Output 3.4: Capacity of service delivery at community level expanded and strengthened with empowered communities that understand climate change and health impacts and are capable of addressing those impacts using community-based health adaptation strategies

Outcome 4: Enhanced south-south cooperation fostering knowledge exchange, the provision of technical assistance and scientific advice, and the integration of national health policy frames and related adaptation plans with ongoing NAP-related processes

Output 4.1: Knowledge exchange and the sharing of the latest techniques and good practices for climate change and health are enhanced

Community-based health adaptation



- Participatory needs assessment
- Community outreach and mapping
- Development and implementation of community-driven interventions
- Support empowerment and mobilization strategies
- Use of storylines and disaster risk management training

What does that mean?

What are we doing?

Establishing a
baseline/situational analysis

Mainstreaming climate
change into health planning

Engaging key
stakeholders



Lessons Learned

1. Practical steps for implementation

2. Build off existing programmes

3. Coordination is key

4. Trust the process

5. Seize opportunities

Acknowledgements

Vanuatu

- Mr Brian Phillips
- Ms Nellie Wouloseje
- Dr Len Tarivonda

Kiribati

- Mr Tawaria Komwenga
- Mr. Teanibuaka Tabunga
- Mr. Michael Sarbane Foon
- Ms. Bungia Kaitaake Kirata

Tuvalu

- Dr Miliama Simeona
- Ms Claire Brigid Whelan
- Dr Suria Elisala Puafolau
- Ms Litiana Talake

Solomon Islands

- Dr Nemia Bainivalu
- Mr. Leonard Olivera
- Mr. Jimmy Jaghorro Hilly
- Mr. Chanel Iroi

WHO

- Dr Mohd Nasir Hassan
- Ms Maraia Meo
- Ms Kelera Oli
- Ms Temalesi Vakaotia
- Dr Changgyo Yoon
- Ms Katri Kontio
- Dr. David Angelson

A tropical sunset scene over the ocean. The sky is filled with large, dark clouds that are illuminated from below by the setting sun, creating a vibrant orange and yellow glow. The sun is a bright, glowing orb positioned just above the horizon line. The ocean in the foreground is dark blue with small, shimmering waves that reflect the light from the sky. On the left side, the silhouettes of palm trees and other tropical vegetation are visible against the bright sky. In the distance, a low, dark landmass or island is visible on the horizon. The overall mood is peaceful and serene.

Thank you!